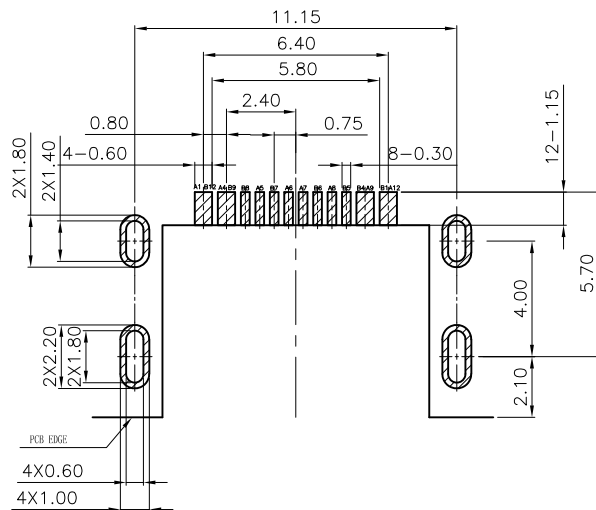
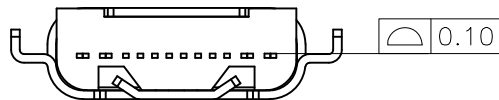


REV.	DESCRIPTION	DATE
A	RELEASE	Feb 18, 2019



RECOMMEND PCB LAYOUT TOP VIEW
TOLERANCE: ±0.05

MATERIALS

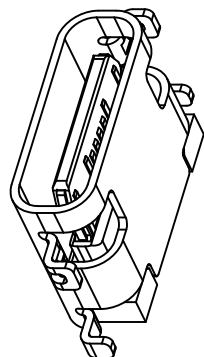
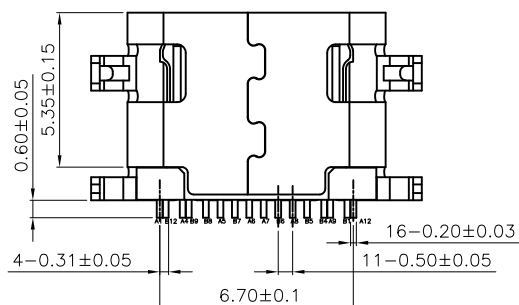
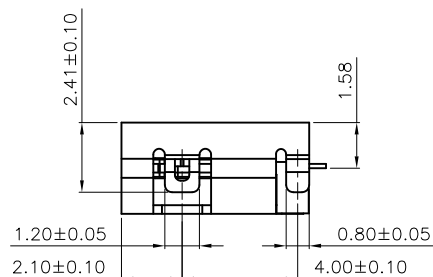
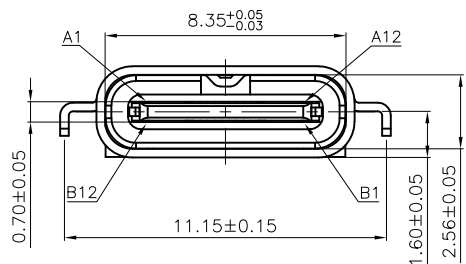
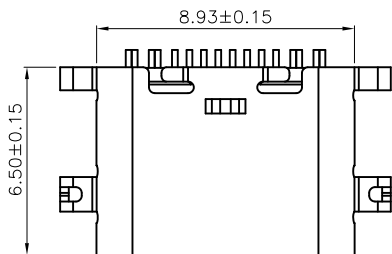
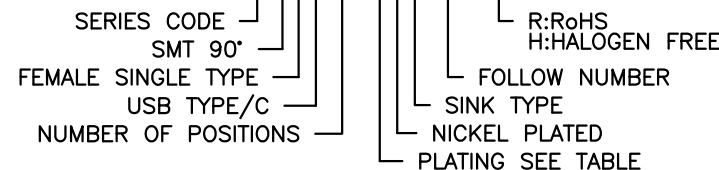
- HOUSING : THERMOPLASTIC (UL 94V-0).
- TERMINAL : COPPER ALLOY,
PLATING : PLATING SEE TABLE.
- SHELL : STAINLESS STEEL,

SPECIFICATION

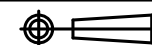
- CURRENT RATING : 5.0 A. MAX.
- DIELECTRIC WITHSTANDING VOLTAGE :
100V AC R.M.S. FOR 1 MINUTE.
- INSULATION RESISTANCE : 100MΩ MIN.AT 500V DC.
- CONTACT RESISTANCE : 40mΩ MAX.
- OPERATING TEMPERATURE : -30°C TO +85°C.

PART NUMBER INFORMATION :

230F816-XN205S-X



PIN	Signal Name	PIN	Signal Name	DESCRIPTION OF PLATING ON TERMINALS			
				NO.	EXPLAIN	NO.	EXPLAIN
A1	GND	B12	GND	0	GOLD FLASH	3	GOLD 15u"
A2		B11		1	GOLD 5u"	4	GOLD 20u"
A3		B10		2	GOLD 10u"	H	G/F + TIN'
A4	VBUS	B9	VBUS	TOLERANCE .0=±0.25 .00=±0.15 .000=±0.05 ANG.=±3°			
A5	CC1	B8	SUB2				
A6	Dp1	B7	Dn2	DRAWER 32L CHECK 32L APP'D HAWX PRODUCT SPEC. —			
A7	Dn1	B6	Dp2				
A8	SUB1	B5	CC2	INMO 东莞市英墨电子有限公司 INMO Electronics Co.,Ltd			
A9	VBUS	B4	VBUS				
A10		B3		NAME TYPEC 母座 单排16PIN 沉板式 1.60mm			
A11		B2					
A12	GND	B1	GND	DRAW NO. R230F816-XN205S-X			



UNITS : mm

SCALE 1:4 SIZE A4 SHEET 1 OF 1 REV. A